

# Bloordale United Church

Planned Gift Fund

A decorative graphic element consisting of a blue curved line that starts on the left side of the slide and curves downwards and to the right, ending in a blue shaded area that tapers to a point on the right edge of the slide.

# Preparing a Plan

We are concerned about the long term viability of our church.



# What a Beautiful World God Created for us



# Bloordale has Started a Planned Gift Fund (PGF)

- The congregation has approved the initiation of a PGF.
- Council has established a PGF Management Committee.
- The committee has been formed and is holding regular planning meetings.
- Promotional activities and materials are being obtained and designed.

# Bloordale Planned Gift Fund is Operational (PGF)

- Information materials are available from the United Church.
- A Bloordale Brochure has been developed.
- A professional advisor is available for confidential advice.

# The First Funds have been Received

- The Fund received its first gift in June 2005 from a family member of the congregation.
- We have subsequently received three bequests and gifts
- A family members have advised that they have named Bloordale in their wills.

# Fund Objectives

- To encourage, receive and administer Special Gifts from members and friends.
- To ensure that any such gifts are carefully invested and managed.
- To ensure that the gifts are used intelligently to extend the life, programs and activities of Bloordale United Church.

# The Committee's Goals are to ensure that :

- All members and friends are aware of the Fund.
- Promotional materials are available to explain the fund and its objectives.
- Informed advisors are available.
- Respectful appreciation and celebration occurs when Special Gifts are pledged and received.
- Confidentiality is observed if the donor so wishes.
- Information seminars and presentations are provided when needed.



# Charitable Gifts Help Reduce Taxes



# Gifts for the Next Generation



# Toronto Conference Bequests

## Bequests Reported by Pastoral Charges Toronto Conference 2004 and 2005

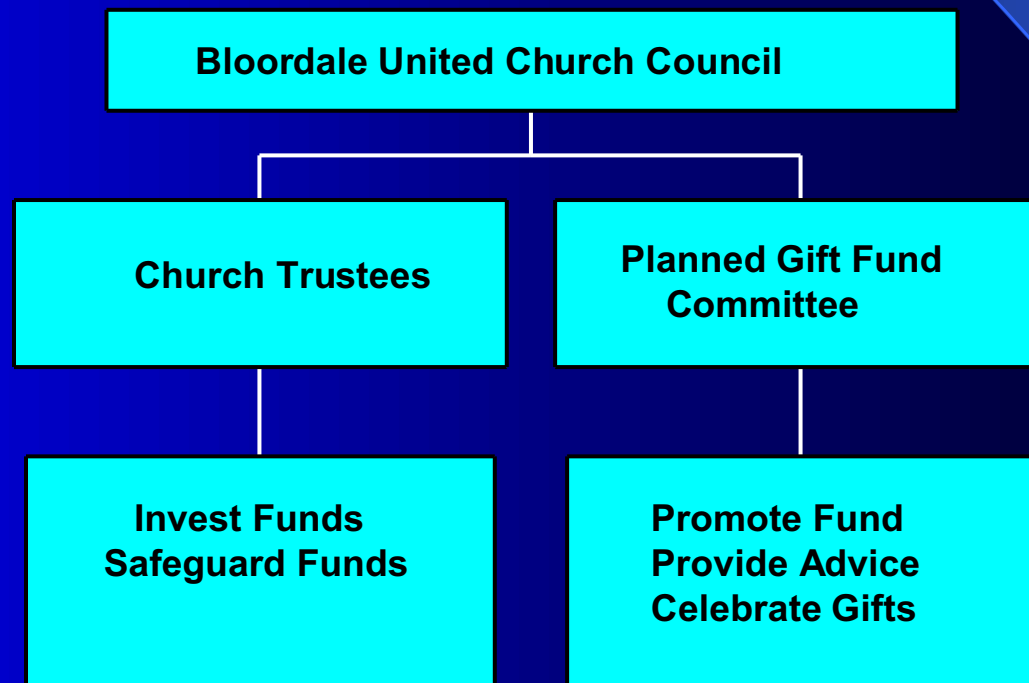
Item	2005	2004
Total Bequests	\$1,251,608	\$1,985,182
Number of Bequests	88	93
Largest	\$225,000	\$250,000
Smallest	\$500	\$500
Average	\$14,223	\$21,346

# Planned Gifts can be given in many forms

- Bequests
- Cash
- Life Insurance
- Annuities
- Securities
- Property
- Personal Property (Art, Antiques, Other)
- Ask a member of your committee or our United Church Advisor to explain the different ways you can contribute to the Planned Gift Fund.

# Organization Chart

## Planned Gift Fund Organization Chart



## The Funds Will be Well Managed

- Your Trustees will be responsible to ensure the funds are carefully managed and invested.
- The PGFC and the Trustees will be responsible for ensuring that the funds are used for approved purposes only.
- The congregation must approve all uses.
- The auditor will be responsible for final verification of the use of the funds.

# Approval Procedure

- How are your gifts safeguarded ?
- Use of the funds must be approved as follows:
  - The Planned Gift Fund Committee (PGFC) will review and analyze recommendations for use of the funds and submit their findings to Council.
  - Council must forward their recommendations to the congregation for all uses of the funds.
  - Congregation must give final approval

# Policy Matters

- People give to such funds because they believe their gifts will make a difference.
- Our policy states that the use of the funds will reflect the ministry of the congregation.
- Balancing concern for long term viability with current programming needs.
- Specified gifts will be used in accordance with the donors wishes.
- However, we encourage donors not to specify, to allow flexibility in the use of the funds.



## Things you can do to Leave a Legacy

- It's surprising how many people don't have a Will.
- Prepare a Will. Without one your wishes may not be fulfilled.
- First remember your loved ones.
- Leave a gift in your Will for the charitable organizations that make a difference in your life.

## Things you can do to Leave a Legacy - Continued

- Imagine the impact on our community and our church if everyone who is able made a gift from his/her estate to the church.
- Consider using assets for your charitable gift. These include but are not limited to cash, stocks, bonds, mutual funds, term deposits, real estate, art or jewelry.
- Name the church as a beneficiary of an existing or paid-up life insurance policy or your RRSP.

## Things you can do to leave a legacy – Continued

- Encourage family and friends to leave a gift to their church in their Wills.
- Ask your financial or estate planning advisor to include charitable giving as part of their counsel to their clients.

# Gifts for the next Generation



# Bequests

- A bequest is a gift made through your will.
- Nearly 50 % of Canadians have not made a will.
- Everyone who has a family, family member with special needs, property or other assets should have a will.
- After providing for your loved ones, please consider a gift to your church.

# Giving with Life Insurance

- A gift of life insurance offers the opportunity to leave a significant gift for a relatively small investment.
- Significant income tax credits are available from such gifts.
- Purchase a new policy with the church as beneficiary and the church receives the death benefits directly.
- Donate an existing policy that your family no longer needs and your estate receives a tax credit.

There are some qualification in this regard..

# Organizing Seminars

- Periodic seminars dealing with the “Estate Planning” and Will preparation may be useful for some members.
- Information seminars on Planned Giving might also be beneficial.
- If you have an interest in any such presentations please complete advise a member of your committee.

# Experience the Joy of Giving

- Enjoy the wonderful feeling of satisfaction knowing you have contributed to the future work of your church.
- Your generosity will encourage the growth of Christianity.
- Blessed are those who share what they have with others.



# Experience the Joy of Giving



A peaceful feeling of satisfaction



# Possible Uses for the Funds

- Major facility improvements.
- Financial support to:
  - strengthen church programs.
  - hire specialized staff
  - fund religious education.
  - community outreach and mission and service programs.

# My Family and Church are very Important to me



# Your Planned Gift Fund

- Please consider Bloordale when you are considering your Legacy and when preparing your Will.

# Who Should you Contact

- Church Minister – 416 – 621 - 1710
- Any Planned Gift Fund Committee member
  - Contact the church office , 416 – 621 - 1710, for names and telephone numbers
- Or ask for our UC Advisor's name and telephone number.

Remember, With your help  
Our Church will live forever

